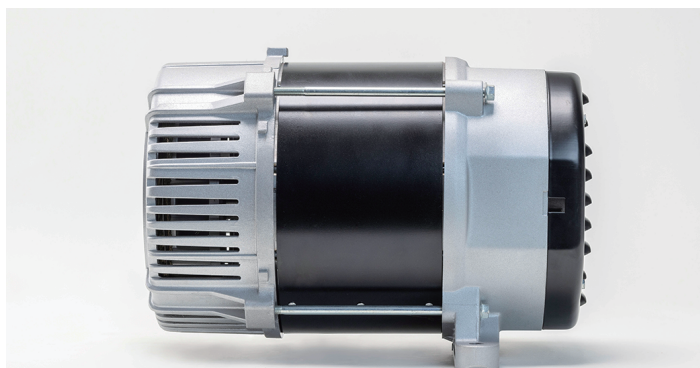


HSB-HTT SERIES

Different voltages for your choice/Aluminum wire or copper wire/Customize your H class alternator for UL approval/Reliable choice for your standby genset

● Reference Picture



● General Characteristics

MODEL	RATED POWER (KW)	MAX POWER (KW)	VOLTAGE (V)	FREQUENCY (Hz)	PHASE	POLES	EXCITING MODE	THD	SHAFT TAPER	INSULATION CLASS	PROTECTION LEVEL
HTT06H	7.5	8	230V 120V/240V	50Hz 60Hz	Single or Three	2	Brushed or Brushless	5%	1:5 or 3:16	CLASS F/H	IP23
HTT01H	8.5	9.5	230V 120V/240V	50Hz 60Hz	Single or Three	2	Brushed or Brushless	5%	1:5 or 3:16	CLASS F/H	IP23
HTT03H	10.0	11	230V 120V/240V	50Hz 60Hz	Single or Three	2	Brushed or Brushless	5%	1:5 or 3:16	CLASS F/H	IP23
HTT05H	12.0	13	230V 120V/240V	50Hz 60Hz	Single or Three	2	Brushed or Brushless	5%	1:5 or 3:16	CLASS F/H	IP23
HTT07H	14.0	15	230V 120V/240V	50Hz 60Hz	Single or Three	2	Brushed or Brushless	5%	1:5 or 3:16	CLASS F/H	IP23

● Dimensions Reference

